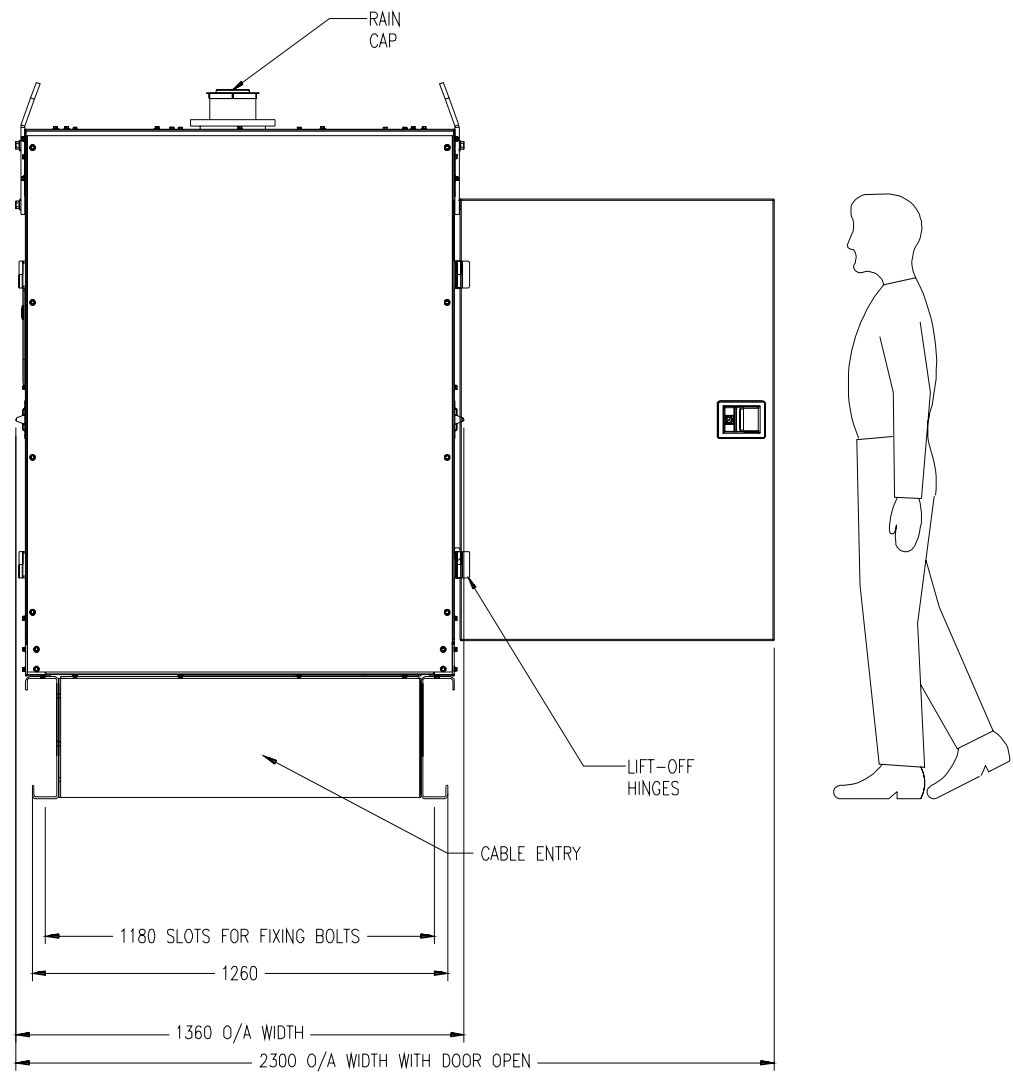
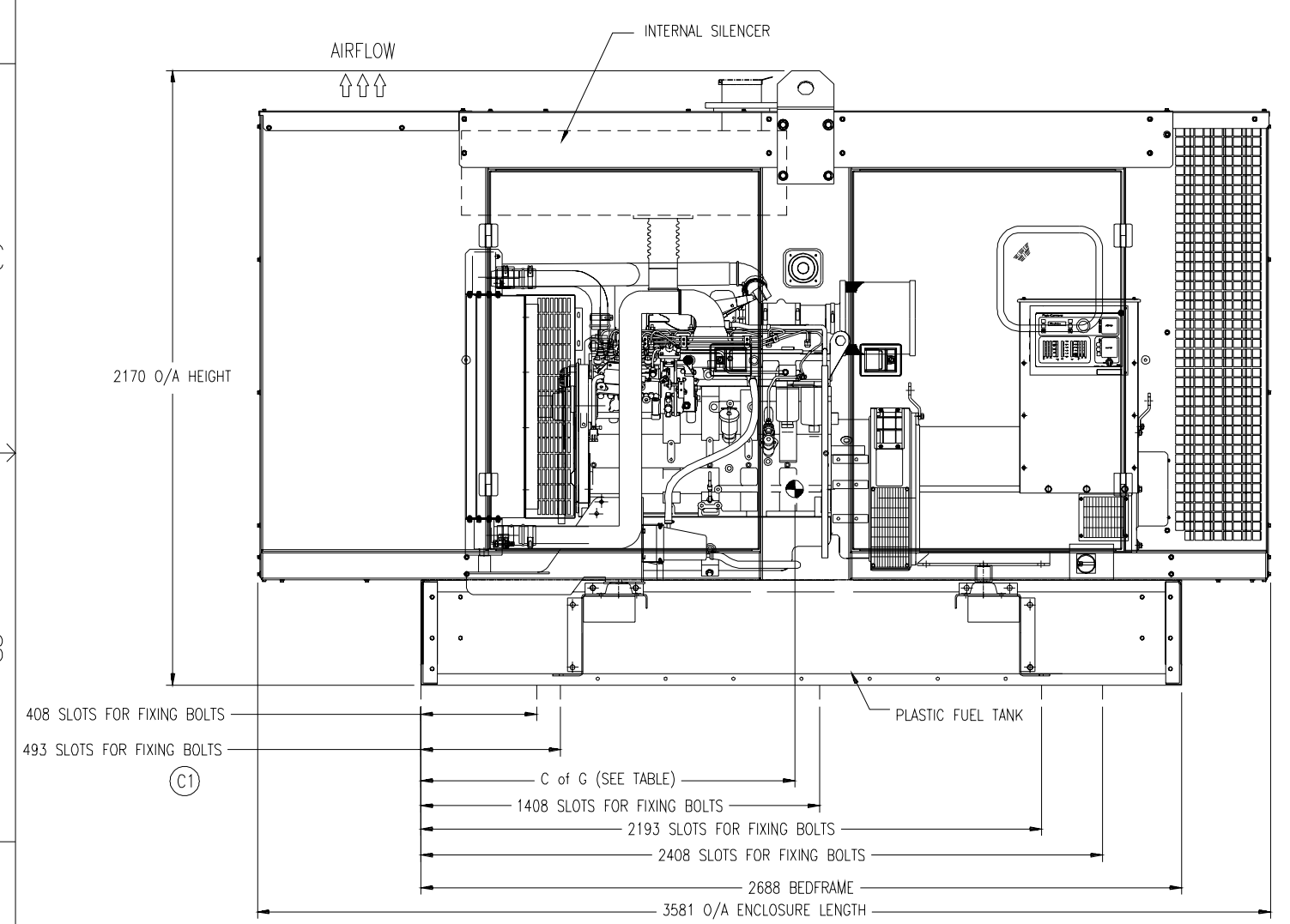


0500-4061 A3

REL. No.	LTR	No.	REVISION	ZONE	DRN	CHKR	APPROVED	DATE
ERK9511	A	1	PRODUCTION RELEASE	-	SS	JMJ	M BARGENT	16/06/04
ERK9830	B	1	CHANGE OF WEIGHT AND COFG DIMS	C3	JM	SS	BARGENT	19/08/04
ERK11161	C	1	FIXING DIMS ADDED	3C	JM	JB	BARGENT	07/05/05

	WEIGHTS		DRY	WITH FUEL		WITHOUT FUEL	
	ENGINE	ALTERNATOR	(kgs)	WET (kgs)	CofG	WET (kgs)	CofG
C250	6CTAA8.3G2	UCD274J	2700	3589	1669	3296	1699

(B1)



- NOTES:
1. C of G DIMENSIONS ARE APPROXIMATE
  2. TERMS AND CONDITIONS CAN BE FOUND AT THE FOLLOWING :- [www.cumminspower.com/terms](http://www.cumminspower.com/terms)

AutoCAD	DO NOT SCALE PRINT	ANGLE TOL.	±1.0'	HOLE	0.09-4.99 = +0.15/-0.08	SIMILAR TO	0500-4002	DRAWN	S SUTTON	DATE	16/06/04	Cummins	Cummins Power Generation Columbus Avenue, Manston, Ramsgate Kent, CT12 5BF, England, UK	
		SCALE:	NTS		5.00-9.99 = +0.20/-0.10		COPIED FROM		0500-4002		CHECKED			J JONES
					10.00-17.49 = +0.25/-0.13	THIRD ANGLE PROJECTION	THIS DOCUMENT IS THE PROPERTY OF CUMMINS POWER GENERATION. IT CONTAINS PROPRIETARY AND CONFIDENTIAL INFORMATION WHICH MUST NOT BE DUPLICATED, USED OR DISCLOSED OTHER THAN AS EXPRESSLY AUTHORIZED BY CUMMINS POWER GENERATION OR ITS REPRESENTATIVE.	APPROVED	M BARGENT	17/06/04	SITE CODE	PGK	DWG No.	0500-4061
					17.50-24.99 = +0.30/-0.13			FOR INTERPRETATION OF DIMENSIONING AND TOLERANCING, SEE BS 308 Part 2	FIRST USED ON	C250 D5				

4

3

2

1