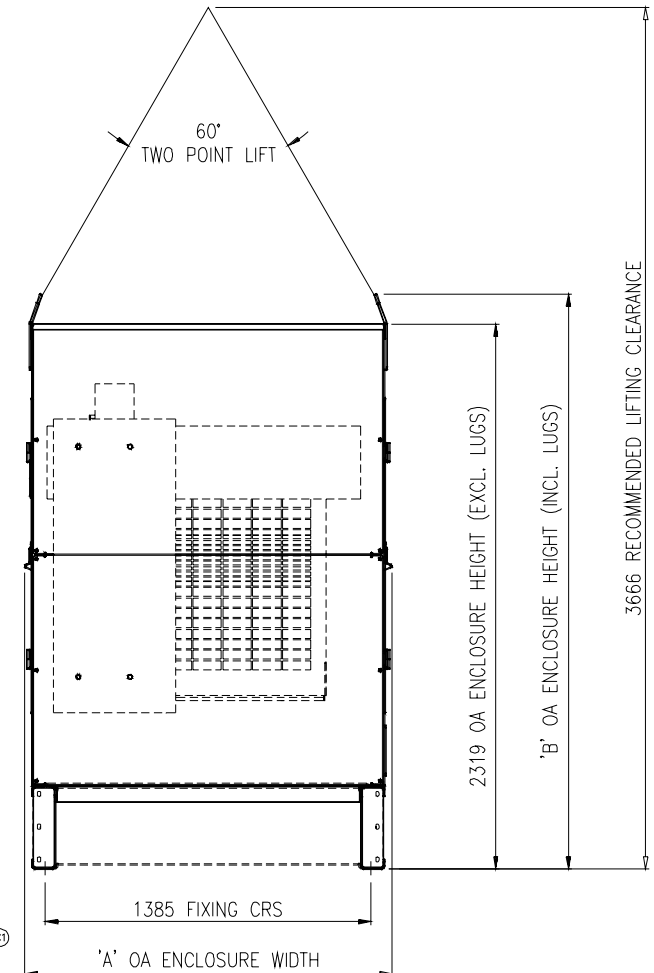
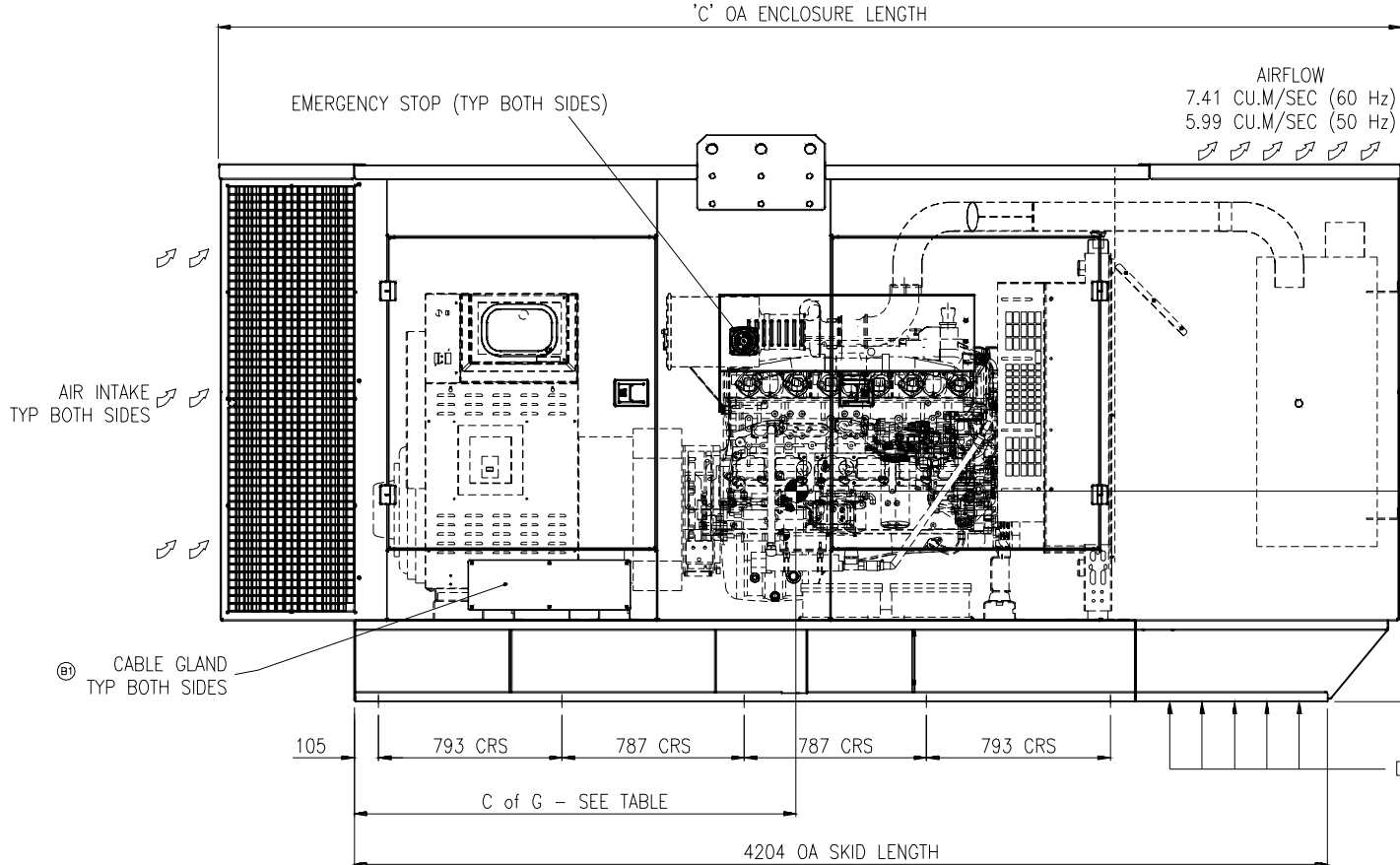


INSTALLATION NOTES:

- PLEASE ALLOW THE FOLLOWING PARAMETER CLEARANCES AROUND THE ENCLOSURE:
SIDE (INCL. OPEN DOORS): 500mm
ABOVE THE CANOPY: 1000mm
- BEDFRAME FIXING POINTS REQUIRE AN M20 FASTENING ARRANGEMENT
- PLEASE REFER TO MANUAL FOR TWO-POINT LIFTING INSTRUCTIONS
- TERMS AND CONDITIONS CAN BE FOUND AT THE FOLLOWING:-
www.cumminspower.com/terms



| MODEL | ENGINE | DRY WEIGHT (kg) | WET WEIGHT (kg) | WET WEIGHT WITH FUEL(kg) | OIL SUMP CAPACITY (L) | DIMENSIONS (mm) | | | | C of G (mm) |
|-----------------|---------------------|-----------------|-----------------|--------------------------|-----------------------|-----------------|------|------|-----|-------------|
| | | | | | | A | B | C | D | |
| C300D5 & C275D6 | NT855G6 | 4664 | 4718 | 5441 | 14 | 1563 | 2447 | 5110 | 819 | 1579 |
| C350D5 & C300D6 | NT855G6 | 4744 | 4798 | 5576 | 14 | 1563 | 2447 | 5110 | 819 | 1565 |
| C400D5 & C350D6 | NTA855G4 & NTA855G3 | 4921 | 4975 | 5698 | 14 | 1563 | 2447 | 5110 | 820 | 1556 |
| C440D5 & C400D6 | NTA855G7 & NTA855G5 | 5041 | 5095 | 5818 | 14 | 1563 | 2447 | 5110 | 820 | 1527 |

AutoCAD DO NOT SCALE PRINT ANGLE TOL. ±1.0° SCALE: 1:15

| | | | |
|--------------------------------------|------------------------|-------|------------|
| TOLERANCE UNLESS OTHERWISE SPECIFIED | SMALL TO ENGR | NAME | DATE |
| ±0.00 - 4.99 = +0.15/-0.08 | THIRD ANGLE PROJECTION | DRN | 13/07/2004 |
| 5.00 - 9.99 = +0.20/-0.10 | | CHKD | 12/10/2004 |
| 10.00 - 17.99 = +0.25/-0.13 | | APPRD | 12/10/2004 |
| 18.00 - 24.99 = +0.30/-0.15 | | | |

FOR INTERPRETATION OF DIMENSIONS AND TOLERANCES SEE SPEC Part 2

C300

PGK

Cummins Power Generation
Columbus Avenue, Manston, Ramsgate
Kent, CT12 5BF, England, UK

ENCLOSURE OUTLINE

SITE CODE: 0500-4074

SHEET 1 of 1